

MODEL SJ-915 DUAL DISC CHECK VALVE

The **Shurjoint** model SJ-915 is a grooved-end dual disc check valve for pipelines conveying water and other fluids with the rated working pressure to 300 psi (20 Bar), available in sizes 14" to 24" / 350 mm to 600 mm. The valve features a fully lined rubber body, spring-loaded 304 stainless steel disc and shafts. The valve can be installed in a horizontal or vertical position (upward flow only). Face to face dimensions conform to API 594 Class 150 and grooved ends to ANSI/AWWAC606.

Seat test: (Hydrostatic) 275 psi / 1.90 MPa

Shell test: (Hydrostatic) 400 psi / 2.75 MPa

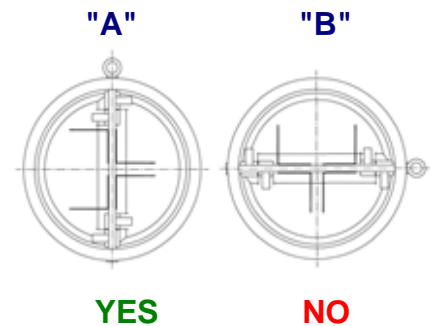


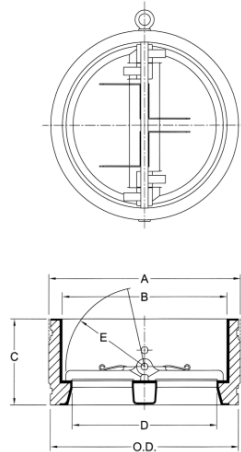
Features

- Lightweight (up to 90% lighter than conventional swing check valves)
- Easy to install with a couple of grooved couplings, more economical than wafer or lugged valves
- The dual disc design produces less water hammer than single disc valves
- The spring-loaded disc design provides for positive closing
- The fully lined rubber body and soft seat reduce noise and maintenance

Warning / Caution:

1. The valve is not intended for fluids containing suspended solids such as wastewater.
2. For horizontal installations, the valve must be positioned so that discs activate bisymmetrically as shown in fig. "A".
3. The valves shall be installed with a distance of five (5) pipe diameters, minimum, downstream from the pump discharge, reducers or elbows.




Model SJ-915 Dual Disc Check Valve

Nominal Size	Pipe O.D.	Max. Working Pressure (CWP)*	Dimensions					Weight
			A	B	C	D	E	
in mm	in mm	PSI Bar	in mm	in mm	in mm	in mm	in mm	Lbs Kgs
14 350	14.000 355.6	300 20	14.49 368	12.96 329	7.13 181	11.14 283	6.06 154	101 46
16 400	16.000 406.4	300 20	16.14 410	14.13 359	7.24 184	12.20 310	6.81 173	119 54
18 450	18.000 457.2	300 20	18.15 461	16.42 417	7.83 199	14.33 364	8.00 203	169 77
20 500	20.000 508.0	300 20	20.04 509	18.11 460	8.46 215	16.06 408	8.80 226	211 96
24 600	24.000 609.6	300 20	24.00 610	22.13 562	9.65 245	18.00 457	9.80 249	288 131

* Working pressure is based on connection with roll- or cut-grooved standard wall carbon steel pipe.

Flow Data – C_v Values

Values for flow of water at +60°F (+16°C).

$$C_v = \frac{Q}{\sqrt{\Delta P}}$$

Where: C_v = Flow coefficient

Q = Flow (GPM)

ΔP = Pressure drop (psi)

**Model #SJ-915 Dual Disc Check Valve
C_v Values**

Nominal Size in / mm	C _v Values
14 350	5,000
16 400	8,350
18 450	10,000
20 500	13,000
24 600	20,500

MATERIAL SPECIFICATIONS

Body:

The valve body is made of ductile iron per ASTM A536, Gr. 65-45-12 and or ASTM A395, Gr. 65-45-15, minimum tensile strength 65,000 psi (448 MPa).

• Body Lining: (to be specified by the purchaser when ordering)

Buna-N: Good for petroleum oils, mineral oils, vegetable oils, aromatic hydrocarbons, many acids and water $\leq +150^{\circ}\text{F}$ ($+65^{\circ}\text{C}$). Maximum temperature range: -20°F (-29°C) to $+180^{\circ}\text{F}$ ($+82^{\circ}\text{C}$).

☐ **EPDM** (Option): Good for cold and hot water service up to $+230^{\circ}\text{F}$ ($+110^{\circ}\text{C}$) and also good for services for water with acid, water with chlorine or chloramines, deionized water, seawater and waste water, dilute acids, oil-free air and many chemicals but not recommended for petroleum oils, mineral oils, solvents and aromatic hydrocarbons. Maximum temperature range: -29°F (-34°C) to $+230^{\circ}\text{F}$ ($+110^{\circ}\text{C}$)*.

*EPDM seat for water services are not recommended for steam services unless valves or components are accessible for frequent replacement.

Discs:

Stainless steel type 304

Disc Shafts:

Stainless steel type 304

Spring:

Stainless steel type 304

Washer:

PTFE

General Notes:

- **Maximum Working Pressure (CWP)** listed is the maximum cold water pressure for general piping services tested to ASTM F1476 and or AWWA C606 methods. Figures listed are based on roll- or cut-grooved standard wall carbon steel pipe. For other pipe schedules or pipe materials, contact **Shurjoint** for additional information.
- **Field Joint Test:** For one time only the system may be tested hydrostatically at $1\frac{1}{2}$ times the maximum working pressure listed (AWWA C606 5.2.3).
- **Warning:** Piping systems must always be depressurized and drained before attempting disassembly and or removal of any components.
- **The Limited Warranty** applies to manufacturing defects only and does not cover severe service/temperature applications or wear parts.
- **Shurjoint** reserves the right to change specifications, designs and or standard without notice and without incurring any obligations.

Shurjoint product specifications in U.S. customary units and metric are approximate and are provided for reference only. For precise measurements, please contact **Shurjoint** Technical Service. **Shurjoint** reserves the right to change or modify product design, construction, specifications, or materials without prior notice and without incurring any obligations to make such changes and modifications on **Shurjoint** products previously subsequently sold.